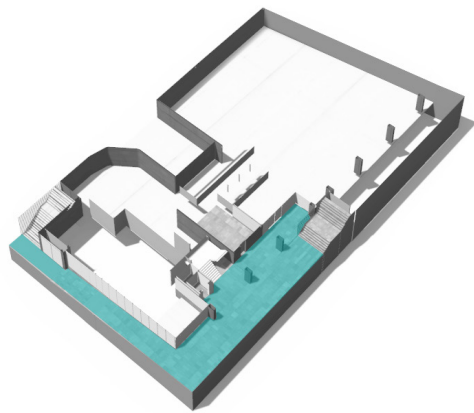
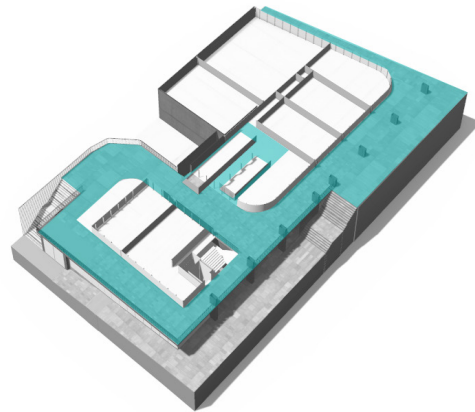


A.5 LANDSCAPE SPACES

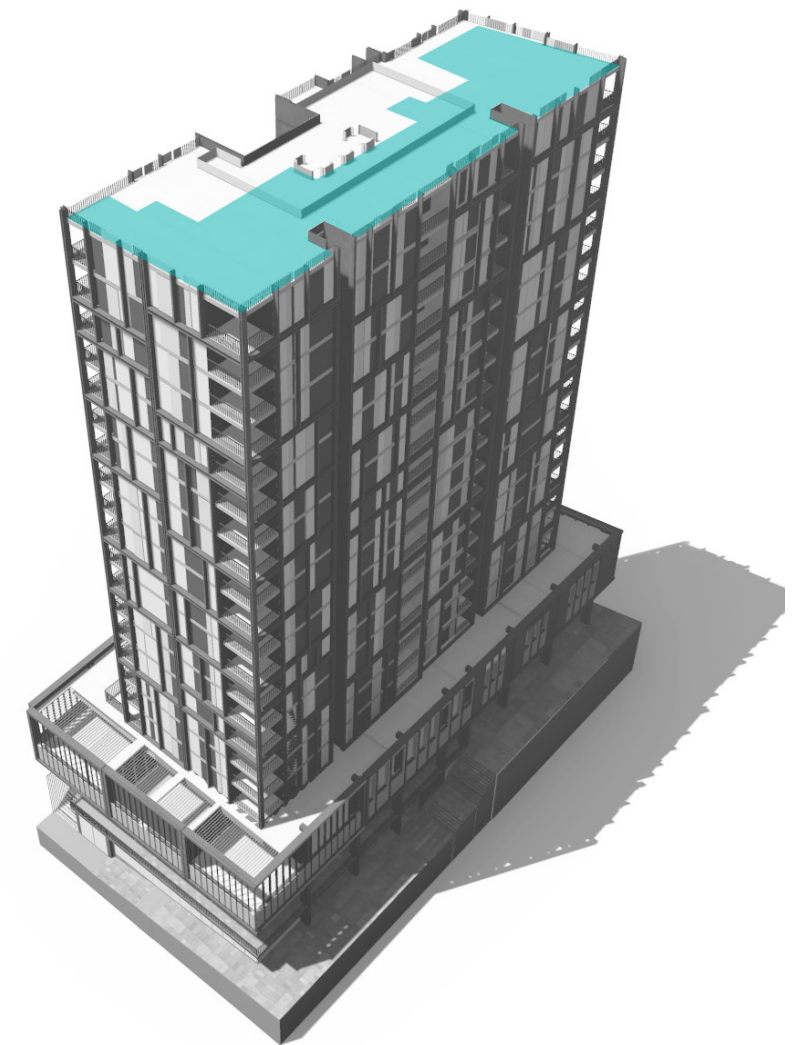
01 RAWSON STREET



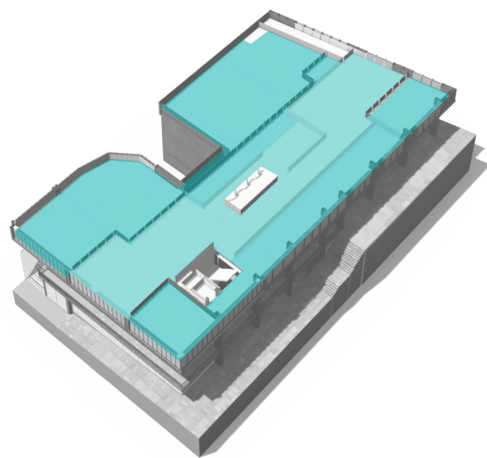
02 BEECROFT ROAD AND LANEWAY



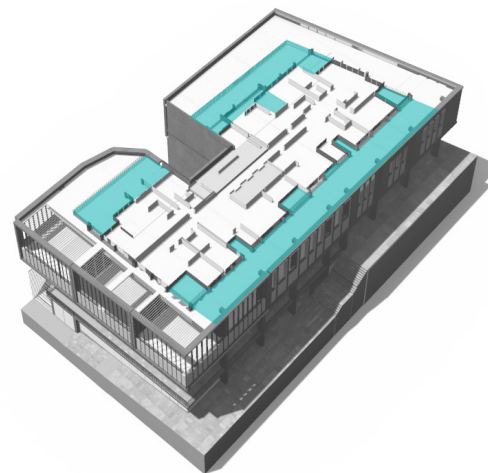
05 ROOFTOP



03 RESIDENTIAL COMMUNAL TERRACE



04 PRIVATE TERRACES





PART B

ADDRESSING THE LANDSCAPE

B.1 GUIDING LANDSCAPE PRINCIPLES

A place rich in character. Driven by a vision of an immersive landscape, the Epping Development will draw on its unique characters to create distinctive landscape zones for both the public and its residents. It will open its doors to the public by creating fine grain connections in a high quality public realm and deliver its residents and children of the crèche spaces you wont want to leave.

OPEN BUT FINE GRAIN



- Apertures and viewlines of connected spaces
- Defined areas of different character

ROBUST BUT FLEXIBLE



- Robust elements with moveable objects
- Occupied spaces of flexible use

WILD BUT REFINED



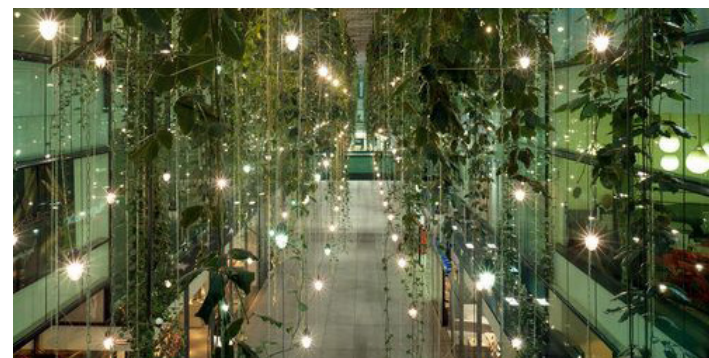
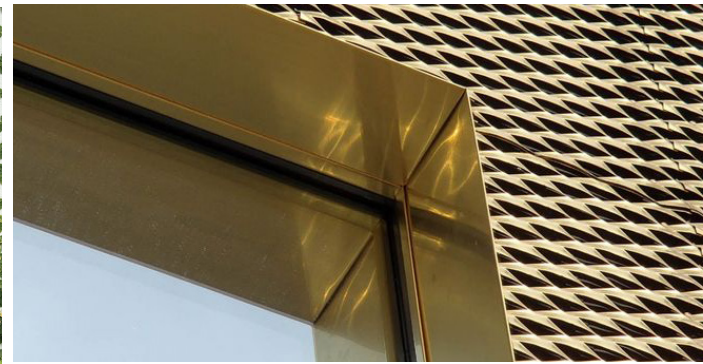
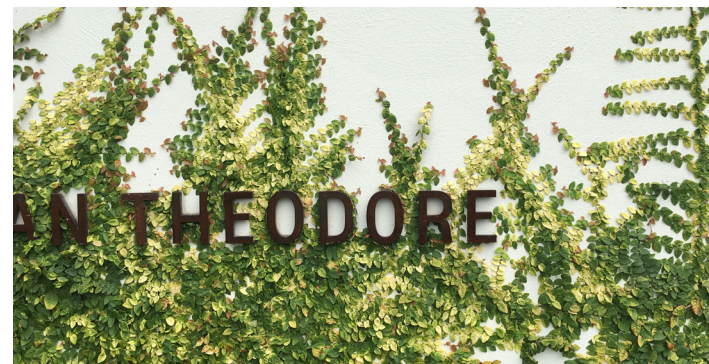
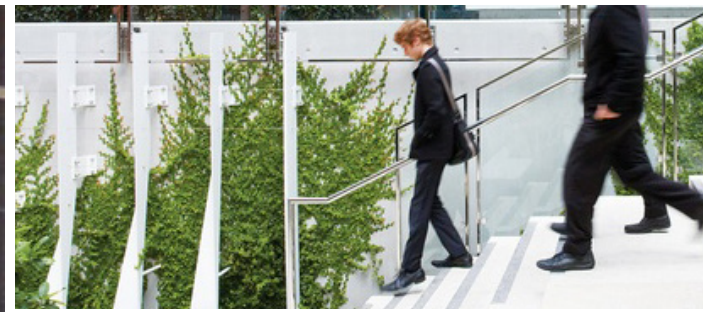
- A visually rich landscape of varying character
- A unique relationship between soft and hardscape

B.2 GROUNDPLANE

DESIGN INTENT

The ground levels are the canvas for public life. They stitch the urban fabric with new and alluring connections between Beecroft and Rawson Streets. Enlivened by an active ground plane, the landscape's simplicity in form allows people to move through the space or stop and take a moment.

The materiality of the groundplane is clean and cohesive to let the planting and its urban elements transpire as the heroes of the space. The insertion of planting through the space will provide its users with a constant and overwhelming connection with the landscape. Dense planter boxes of eye-catching species, green walls, climbers and hanging planting will be mirrored through reflective panels to create a ravine-like character with green all around. This will be complimented by sculptural urban elements that populate the laneways for seating opportunities.





LANDSCAPE PLAN - RAWSON STREET

WSUD TREE PITS TO RAWSON STREET.
REFER ENGINEERS DOCUMENTATION

AUSTRAL BLACK
GRANITE & SESAME GREY
FLAGSTONE - 400X300X50 &
600X300X50 - EXFOLIATED FINISH

LANEWAY

BECROFT ROAD

BASEMENT EXTENTS

BASEMENT EXTENTS

PROPERTY BOUNDARY

PROPERTY BOUNDARY

AWNING OVERHEAD REFER TO
ARCHITECTURAL DETAILS

BALUSTRADE TO TOP OF RETAINING
WALL (BEHIND PLANTERS)
VEHICULAR BOLLARDS. REFER
ENGINEER'S DOCUMENTATION

900X900 GRATE FOR MAINTENANCE ACCESS
REFER TO ENGINEERS DOCUMENTATION

FLUSH TREE PLANTER REFER TO
SECTION HUNTS LINE PLANTER DETAIL

ACCESS CHAMBER WITH INFILL LID
REFER TO ENGINEERS DOCUMENTATION

HANDRAIL TO STEPS
TACTILE INDICATORS

HUNTS LANE STREET TREE SPECIES:
LAGERSTROEMIA INDICA

RAWSON STREET TREE SPECIES:
WATERHOUSEA FLORIBUNDA

SESAME GREY GRANITE SETTS TO VEHICLE
CROSSOVER. 90X90X50 EXFOLIATED FINISH

- Legend
- 1

Steps to Hunts Lane
- 2

Powdercoated steel planters
- 3

Bench
- 4

Bike racks
- 5

Connection to upper laneway
- 6

On-street dining
- 7

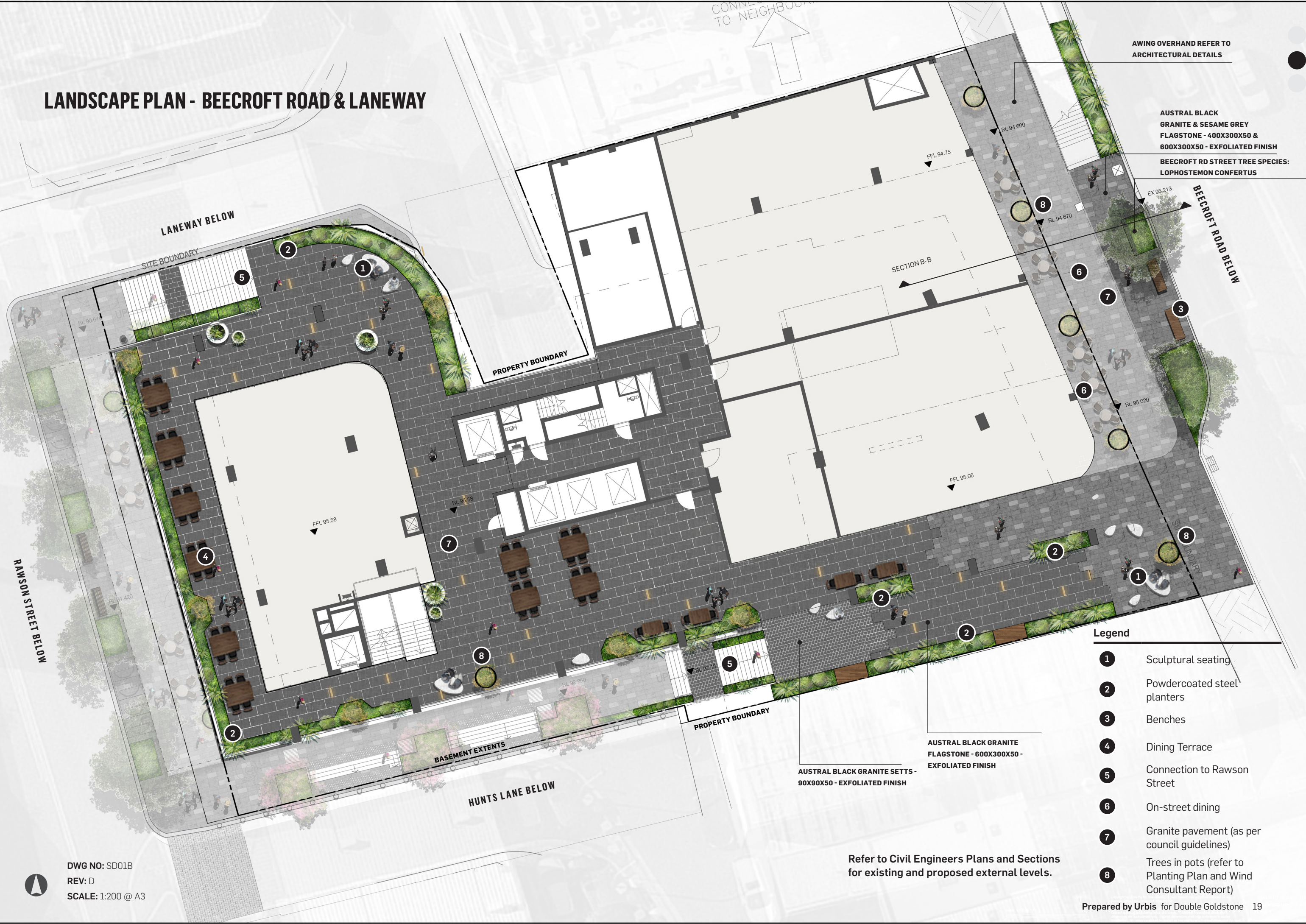
Granite pavement (as per council guidelines)
- 8

Trees in pots (refer to Planting Plan and Wind Consultant Report)

Refer to Civil Engineers Plans and Sections
for existing and proposed external levels.

DWG NO: SD01B
REV: D
SCALE: 1:200 @ A3

LANDSCAPE PLAN - BEECROFT ROAD & LANEWAY



AWING OVERHAND REFER TO ARCHITECTURAL DETAILS

AUSTRAL BLACK GRANITE & SESAME GREY FLAGSTONE - 400X300X50 & 600X300X50 - EXFOLIATED FINISH

BEECROFT RD STREET TREE SPECIES: LOPHOSTEMON CONFERTUS

- Legend**
- 1 Sculptural seating
 - 2 Powdercoated steel planters
 - 3 Benches
 - 4 Dining Terrace
 - 5 Connection to Rawson Street
 - 6 On-street dining
 - 7 Granite pavement (as per council guidelines)
 - 8 Trees in pots (refer to Planting Plan and Wind Consultant Report)

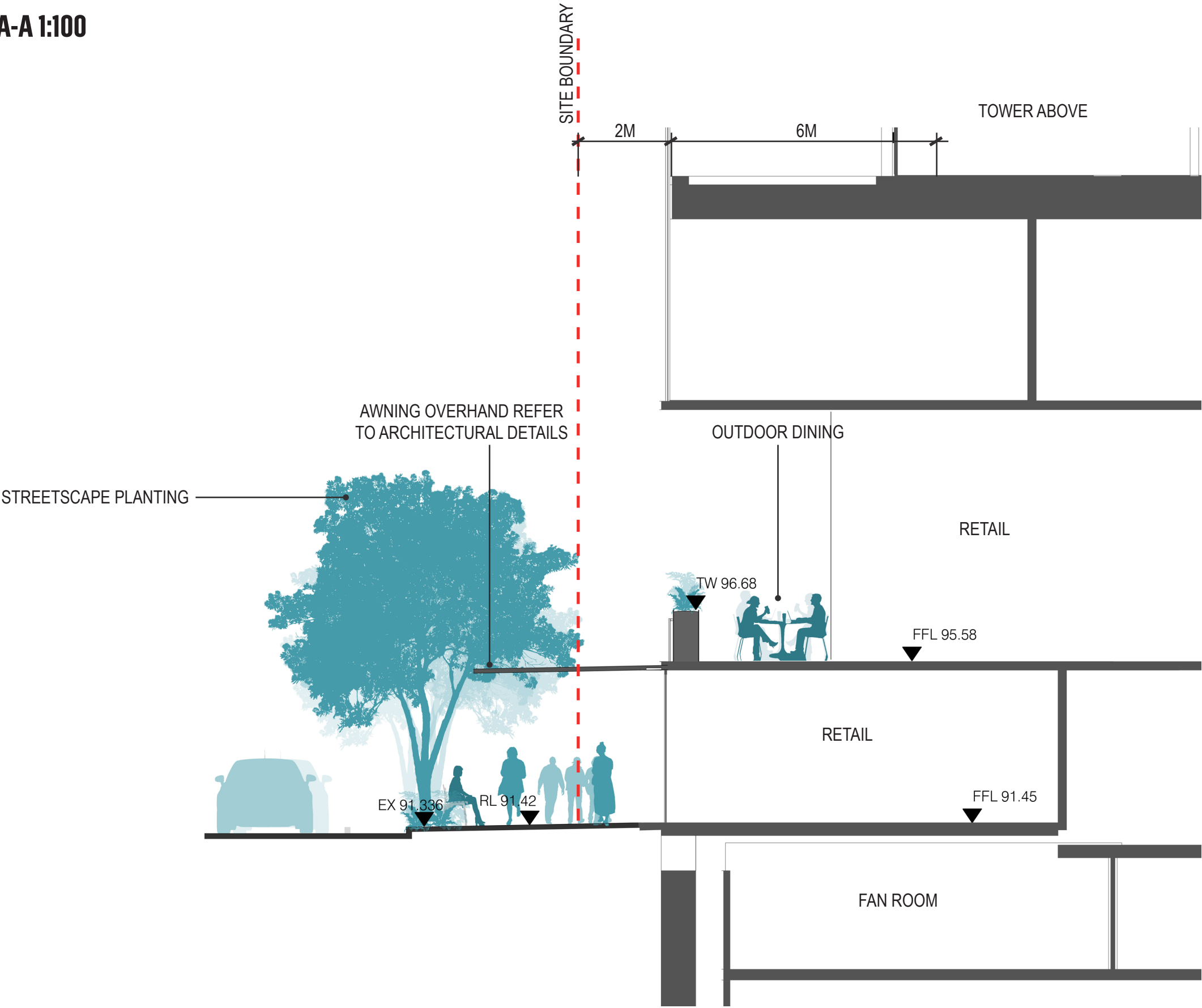
AUSTRAL BLACK GRANITE FLAGSTONE - 600X300X50 - EXFOLIATED FINISH

AUSTRAL BLACK GRANITE SETTS - 90X90X50 - EXFOLIATED FINISH

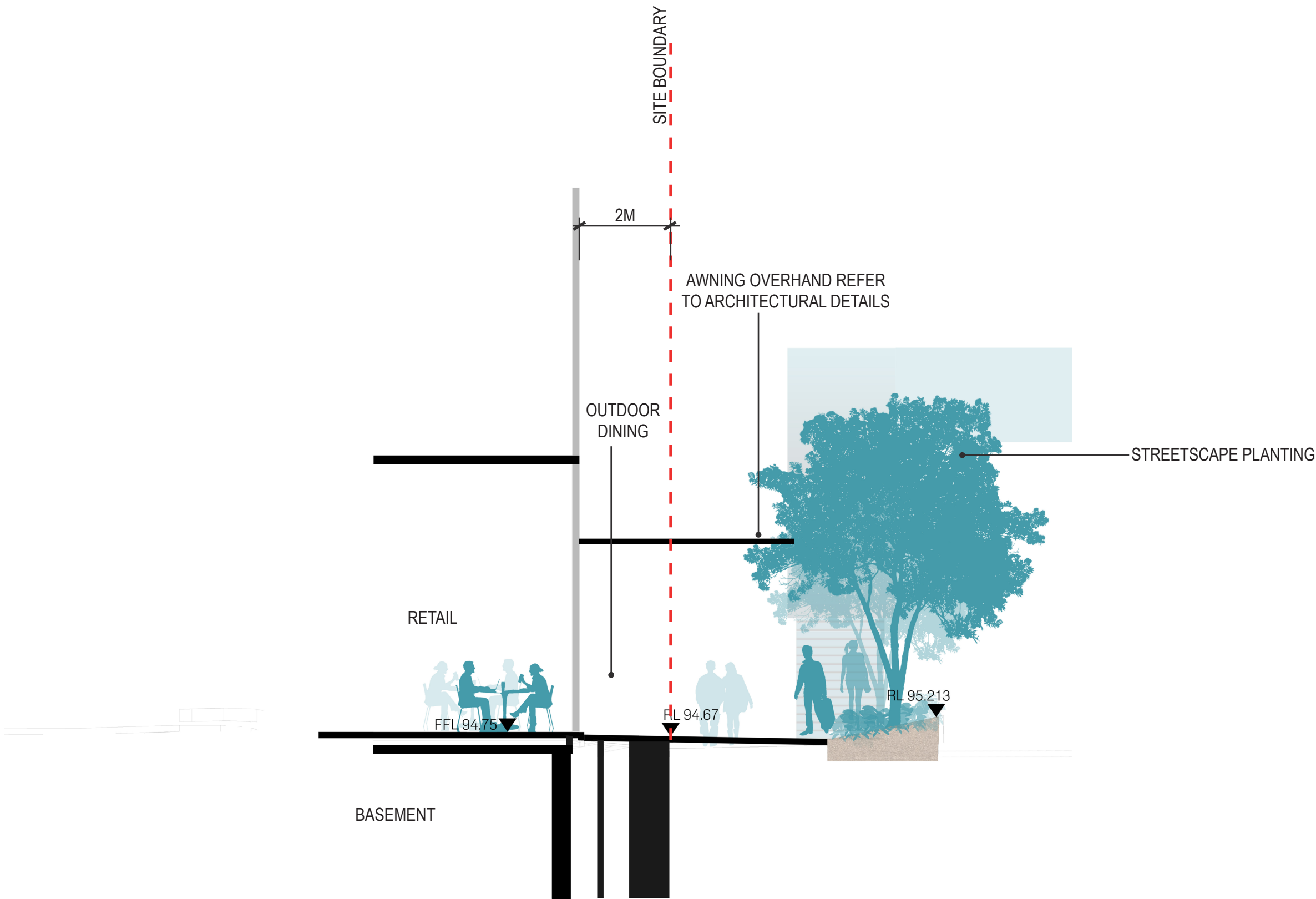
Refer to Civil Engineers Plans and Sections for existing and proposed external levels.

DWG NO: SD01B
REV: D
SCALE: 1:200 @ A3

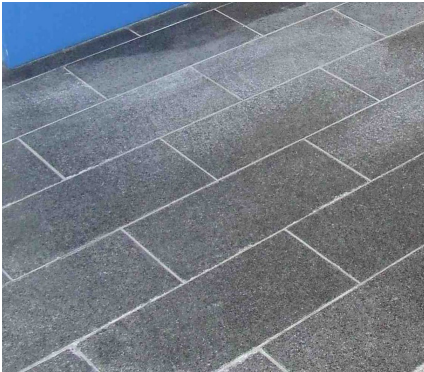
SECTION A-A 1:100



SECTION B-B 1:100



HARDSCAPE



Name: Austral black
Material: Granite Flagstone
Finish: Exfoliated
Size: 400x300x50 & 600x300x50



Name: Sesame Grey
Material: Granite Setts
Size: 90x90x50
Finish: Exfoliated



Item: Bike Rack
Model: Semi Hoop
Finish: Polished



Item: Street Seat
Supplier: Street Furniture Australia
Model: Concourse Bench
Finish: Aluminium Finish



Cafe Dining



Black Powder Coat Steel Garden Beds



Paving Lights



Catenary Lighting



Sculptural Seating



Street Tree Grate

SOFTSCAPE



Street Tree: Lophostemon confertus



Spill Over Plants



Native and Exotic Plants



Varied Form and Colour



Tolerant Street Planting



Fragrant Plants



Stair Planting

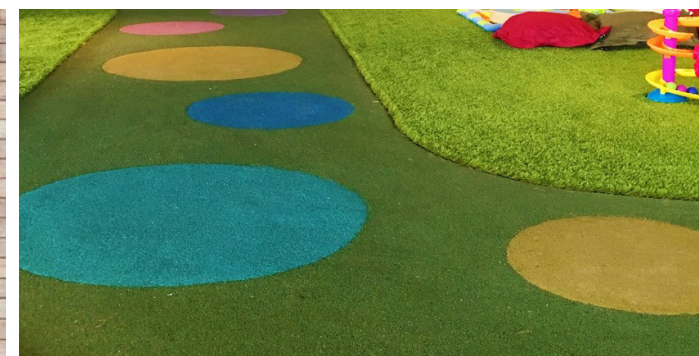
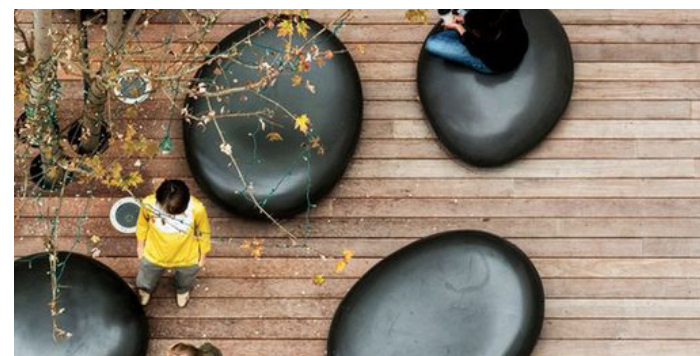


B.3 RESIDENTIAL COMMUNAL TERRACE

DESIGN INTENT

The landscape of the crèche will be imaginative and immersive. The crèche is enclosed by an edge of raised planters separating the public domain with a soft boundary. This area also uses pops of colour in the landscape relating to the play and recreational activities within the crèche. This outdoor passive and active recreational space is defined by numerous play, fitness, relaxation and recreational activities. These consist of:

- Bbq and Dining
- Fitness Station
- Reading/ Quiet Lawn
- Table Tennis
- Childrens Play Area
- Fitness Track
- Yoga Lawn



LANDSCAPE PLAN

AREA OF ROOF INCLUDING OPENINGS WITH
INTEGRATED OPERABLE SHADE AND PRIVACY
SCREEN (REFER TO ARCHITECTS DRAWINGS)

LANEWAY BELOW

AREA OF ROOF INCLUDING OPENINGS WITH
INTEGRATED OPERABLE SHADE AND PRIVACY
SCREEN (REFER TO ARCHITECTS DRAWINGS)

BECROFT ROAD BELOW

RAMSON STREET BELOW

HUNTS LANE BELOW

- Legend
- 1 Bbq and Dining
 - 2 Fitness Stations
 - 3 Reading/ Quiet Lawn
 - 4 Table Tennis Facilities
 - 5 Yoga Lawn
 - 6 Childrens Play
 - 7 Lawn
 - 8 Fitness Track
 - 9 Lobby

DWG NO: SD01B
REV: C
SCALE: 1:200 @ A3